

# The GENERAL 2018 PRACTICE EDUCATION DAY MELBOURNE

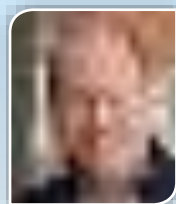
Saturday 20 October 8.30am–6.30pm Melbourne Convention & Exhibition Centre, South Wharf



Activity no. 133924



- 16 CATEGORY 2 CPD POINTS
- FREE ACTIVE LEARNING MODULE
- 
- DOWNLOAD THE HEALTHED APP



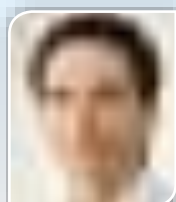
### Nutritional and Nutraceutical Approaches for Depression

**Prof Michael Berk**  
Psychiatrist; NHMRC Senior Principal Research Fellow; Deakin University and Barwon Health



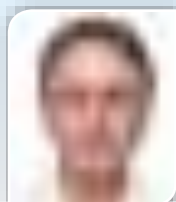
### Current Migraine Prevention and Management

**A/Prof Richard Stark**  
Neurologist, Alfred Hospital Melbourne



### CV Risk and Testosterone – Fact Vs Fiction

**Prof Mathis Grossmann**  
Physician-Scientist; Head of Andrology, Austin Health



### Traveller's Diarrhoea – A Guide to Assessment, Management and Prevention

**Dr Bernard Hudson**  
Microbiologist and Infectious Diseases Physician, Royal North Shore Hospital

## WHY YOU SHOULD ATTEND

- Leading experts
- Engaging speakers
- Broad range of topics
- Latest and up-to-date information
- Practical take home messages
- Cost efficient one-day program

## YOU ARE INVITED

Healthed invites you to attend this high quality educational event ideally suited to General Practitioners and other Health Professionals.

This meeting will feature leading experts and key opinion leaders who will present the most authoritative, clinically relevant information on topic areas specifically requested by Australian medical practitioners. We look forward to seeing you at this unrivalled General Practice education day.

**The Healthed Team**

## REGISTRATION INCLUDES

- Access to entire program
- Handbook with lecture notes
- Morning tea, lunch & afternoon tea
- Access to trade exhibition
- Posted copy of an attendance certificate
- All registrations will be acknowledged in writing after receipt of payment

## REGISTRATION ENQUIRIES

Enquiries at the Conference Secretariat:

**Phone:** 1300 797 794 **Fax** 1300 797 792

**Mail:** Melbourne GP Education Day  
PO BOX 500 Burwood NSW 1805 Australia

**Email:** [info@healthed.com.au](mailto:info@healthed.com.au)  
**Discount Registration Available Online**  
[www.healthed.com.au](http://www.healthed.com.au)

**On the Day:** Info desk will be located on-site at the event for any queries

## EDUCATION POINTS

- Category 2: 16 CPD points approved by the RACGP
- 8 Core PDP points approved by the ACRRM
- OPTIONAL ALM – Category 1: 40 CPD points approved by the RACGP for the 2017-2019 Triennium.

## DOWNLOAD THE HEALTHED APP



Download the app on your smartphone or tablet from the App Store or Google Play.

*Bring your own device and enhance your learning with the Healthed app*

Enhance your learning experience with the NEW Healthed app! Download before the seminar to get access to heaps of exciting features:

- View the lecture slides – zoom in for comfortable reading
- Sign in for your CPD points – no need to queue!
- Download and save the full seminar handbook

\*Please make sure you allow both location services and notifications when downloading the app

## HIGH QUALITY CONTENT

Healthed strives to maintain the highest possible standard of educational quality throughout its seminar programs. All our speakers are clearly instructed to present information that is authoritative, independent, scientifically accurate and of practical relevance.

In our constant search for high quality educational content we take input from GPs, specialists, researchers, medical educators, industry and many other sources. Their ideas are scrutinised carefully before being introduced into the educational program.

## FEEDBACK FROM OUR RECENT SEMINARS

- 99% very satisfied/satisfied with the seminar's scientific accuracy
- 98% very satisfied/satisfied that the lecturers represented reasonable and balanced views
- 96% of respondents were very satisfied/satisfied with the level of independence from commercial bias

## VENUE & TRANSPORT

The event will be held at the Melbourne Convention & Exhibition Centre, 1 Convention Place, South Wharf, VIC.

- Melbourne Exhibition Centre 1,060 undercover parking spaces managed by Wilson Parking, entrance via Normanby Road.
- South Wharf Retail Car Park 550 open air parking spaces managed by Wilson Parking, entrance off Normanby Road or Montague Street.

The Melbourne Convention & Exhibition Centre is accessible by public transport. Please visit <http://ptv.vic.gov.au/> to plan your trip.

## FACULTY & SPEAKERS



Dr Peter van Wijngaarden,  
Ophthalmologist; University  
of Melbourne; Deputy  
Director, Centre for Eye  
Research Australia

Diabetic Eye – Practical  
Advice for GPs



Dr Kymble Spriggs,  
Allergist and Immunologist;  
Consultant Physician, Royal  
Melbourne Hospital

Update on Clinical Aspects  
of Anaphylaxis



Dr James Newcombe,  
Microbiologist and  
Infectious Diseases  
Physician; NSW Health  
Pathology

Meningitis in Infants and  
Adolescents – An Update  
on This Important Emerging  
Issue

# PROGRAM

**Registration from 7:30am**

Each talk is approx. 25 mins in duration

**Morning Tea** 11am – **Lunch** 1.30pm – **Afternoon Tea** 4.30pm

## CVS

CV Risk and Testosterone – Fact Vs Fiction	<b>Prof Mathis Grossmann</b> , Physician-Scientist; Head of Andrology, Austin Health
An Overview of the 2018 Australian Heart Failure Guidelines for GPs	<b>A/Prof John Amerena</b> , Cardiologist; Appoints at Medical School, Deakin University

## RESPIRATORY & SLEEP

A Practical Guide to Melatonin For Insomnia	<b>A/Prof Jeremy Goldin</b> , Respiratory and Sleep Disorders Physician; Head of Sleep Medicine, Royal Melbourne Hospital
COPD – Therapeutic Update	<b>Dr Philip Lee</b> , Respiratory and Sleep Physician, St George Hospital
COPD – Device Workshop	<b>Dr Michael Ho</b> , Consultant Respiratory and Sleep Physician; Director, Monash Sleep Centre and South Eastern Private Sleep Centre

## INFECTIOUS DISEASE

Traveller's Diarrhoea – A Guide to Assessment, Management and Prevention	<b>Dr Bernard Hudson</b> , Microbiologist and Infectious Diseases Physician; Head, Department of Infectious Diseases and Clinical Microbiology, Royal North Shore Hospital
Meningitis in Infants and Adolescents – An Update on This Important Emerging Issue	<b>Dr James Newcombe</b> , Microbiologist and Infectious Diseases Physician; NSW Health Pathology
Identifying and Managing the Impacts of a Post-Polio History	<b>Dr Stephen de Graaff</b> , Rehabilitation Physician; Clinical Advisory Group Member – Polio Australia, Epworth HealthCare

## DIABETES

Diabetic Eye – Practical Advice for GPs	<b>Dr Peter van Wijngaarden</b> , Ophthalmologist; University of Melbourne; Deputy Director, Centre for Eye Research Australia
Type 2 Diabetes and Renal Impairment – How to Manage	<b>Dr Ivan Kuo</b> , Endocrinologist; Nepean and Campbelltown Hospitals
SGLTs – First Option for Second Line Therapy?	<b>Dr Gary Deed</b> , GP; Chair, The Diabetes Specific Interest Network RACGP

## ALLERGY

Update on Clinical Aspects of Anaphylaxis	<b>Dr Kymble Spriggs</b> , Allergist and Immunologist; Consultant Physician, Royal Melbourne Hospital
Allergic Rhinitis – Optimising Management	<b>Dr Kymble Spriggs</b> , Allergist and Immunologist; Consultant Physician, Royal Melbourne Hospital

## PAIN

Current Migraine Prevention and Management	<b>A/Prof Richard Stark</b> , Neurologist; Deputy Head of Unit, Neurology Department, Alfred Hospital; Department of Medicine, Monash University
Early Chronic Pancreatitis – Are You Missing It?	<b>Dr Andrew J Metz</b> , Gastroenterologist and Interventional Endoscopist; Director of Endoscopy, Royal Melbourne Hospital
Atypical Opioids – Practical Guide to Initiation, Dosing and Titration	<b>Dr Guy Bashford</b> , Pain Medicine Specialist and Rehabilitation Specialist, Wollongong Private Hospital

## MISCELLANEOUS

Using Digital Technology to Improve Clinical Practice Outcomes	<b>A/Prof Jared Dart</b> , GP and Adjunct Associate Professor, Bond University
Nutritional and Nutraceutical Approaches for Depression – Do They Help?	<b>Prof Michael Berk</b> , Psychiatrist; NHMRC Senior Principal Research Fellow, Alfred Deakin Chair of Psychiatry, Deakin University and Barwon Health

The above program is an indication of topics and speakers only and is not the final schedule. Program was correct at time of printing and is subject to change without notice. See [www.healthed.com.au](http://www.healthed.com.au) for updates



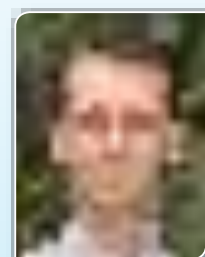
**Dr Andrew J Metz**, Gastroenterologist and Interventional Endoscopist; Director of Endoscopy, Royal Melbourne Hospital

Early Chronic Pancreatitis – Are You Missing It?



**Dr Stephen de Graaff**, Rehabilitation Physician; Clinical Advisory Group Member – Polio Australia, Epworth HealthCare

Identifying and Managing the Impacts of a Post-Polio History



**A/Prof Jared Dart**, GP and Adjunct Associate Professor, Bond University

Using Digital Technology to Improve Clinical Practice Outcomes

# The GENERAL PRACTICE EDUCATION DAY 2018

**REGISTER ONLINE @**  
**healthed.com.au**

Saturday 20 October • 8.30am–6.30pm  
 Melbourne Convention & Exhibition Centre, South Wharf

REGISTRATION FORM	MAIL/FAX/PHONE	ONLINE
Super Early Bird until August 17	<input type="checkbox"/> \$180	<b>\$160</b>
Early Bird until October 12	<input type="checkbox"/> \$185	<b>\$170</b>
Standard	<input type="checkbox"/> \$199	<b>\$185</b>

I am interested in (tick box )

Register to attend seminar     Basic CPR workshop \$150/\$160 (See below for details)  
 Free DVD Subscription (See below)

RACGP QI&CPD/  
ACRRM Education No: \_\_\_\_\_

Free DVD Subscription: Which topics interest you?     Women's Health     Mental Health     Diabetes     Paediatrics     CVD     Men's Health     Dermatology

Special Catering Request\*     Vegetarian     Vegan     Gluten Free    **\*denotes required information**

I am a     Doctor     Nurse/Midwife     Pharmacist     Other \_\_\_\_\_

Title\* \_\_\_\_\_ Given Name\* \_\_\_\_\_ Surname\* \_\_\_\_\_

Organisation \_\_\_\_\_

Postal Address\* \_\_\_\_\_

Suburb \_\_\_\_\_ State\* \_\_\_\_\_ Postcode\* \_\_\_\_\_

Work Phone\* \_\_\_\_\_ Work Fax\* \_\_\_\_\_

Email\* \_\_\_\_\_ Mobile \_\_\_\_\_

**TAX INVOICE, CONFIRMATION OF REGISTRATION AND SUPPLEMENTARY EDUCATION MATERIALS WILL BE SENT BY EMAIL – PLEASE WRITE CLEARLY**

Yes I wish to attend: (tick box ) and pay by:     Visa     Mastercard     Cheque \$ \_\_\_\_\_ Total

Cheques are to be made payable to: "HealthEd" All Prices are in Australian Dollars (AUD)

Card Number \_\_\_\_\_ Expiry \_\_\_ / \_\_\_ CCV \_\_\_\_\_

Name on Card \_\_\_\_\_ Signature \_\_\_\_\_

**Return your registration form & payment to HEALTHED PTY LTD PO BOX 500 Burwood NSW 1805 or FAX 1300 797 792**

### FREE DVD SUBSCRIPTION

HealthEd is producing a range of free video resources for Australia's health professionals. The DVDs will feature some of our best rated lectures from our wide variety of events.

- Watch from the comfort of your home!
- Gain CPD points with each lecture
- Ideal for revision
- Perfect for non-metro GPs - no need to travel
- Best of all – it's FREE!



### BASIC CPR FOR RACGP



In this workshop delegates will have the opportunity to participate in an interactive workshop involving an update on latest CPR guidelines and use of automated defibrillators followed by assessment of CPR skills.

The workshop will be approximately 1-1.5 hrs duration, supervised by qualified ARC accredited instructors and will be compliant with all RACGP requirements.

**\$150 for delegates    \$160 for non-delegates**

**HEALTHED SPONSORS:** Andrology Australia, Aspen Australia, AstraZeneca Australia, Bayer Consumer Care, Besins Healthcare, Boehringer Ingelheim Pty Ltd, Clinical Labs, Cobram Estate, Dr Jones & Partners Medical Imaging, Ferring, GSK Vaccines, Lawley Pharmaceuticals, Leo Pharma, Medsoc, Menarini, Mylan, Novartis, Pink Hope Organisation, Seqirus, Servier, Sonic Healthcare, Teva, The a2 Milk Company, UCB Australia.

**CANCELLATION:** Cancellation must be in writing and directed to the seminar secretariat, at least 21 days prior to scheduled seminar date. Refund is not available if registration is cancelled less than 21 days prior to seminar date. Cancellation fee is \$100, deductible from your refund. If you wish to cancel or transfer your registration to another person, please notify the secretariat through info@healthed.com.au.

**Liability:** The organisers will make every effort to ensure that the event and the program will take place as advertised however the organisers do not take financial responsibility to changes or disruptions that may occur as a result of events beyond their control. Important privacy information: HealthEd acknowledges and respects your privacy. The information you provide on this form is being collected for the purpose of processing your registration or inquiry. The provision of the information requested is voluntary. However, if you do not provide the information requested, we may be unable to process your registration or enquiry. We will use the information to keep you informed about products, services, offers and upcoming events and to improve services to you. We will also provide information about you to the sponsors of and the exhibitors in the Exhibition for the purpose of providing you with direct marketing offers, which we think may be of interest to you. If you do not consent to this disclosure of information about you or if you do not want to receive information about other HealthEd educational seminars please call us on 1300 797 794. You have a right to access the information that HealthEd holds about you. Please direct any enquiries you may have in relation to the use of our privacy information policy by calling HealthEd on Tel 1300 797 794, enquiries@healthed.com.au or by post to PO Box 500, Burwood NSW 1805.

